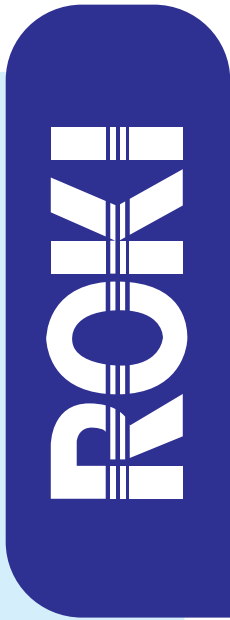
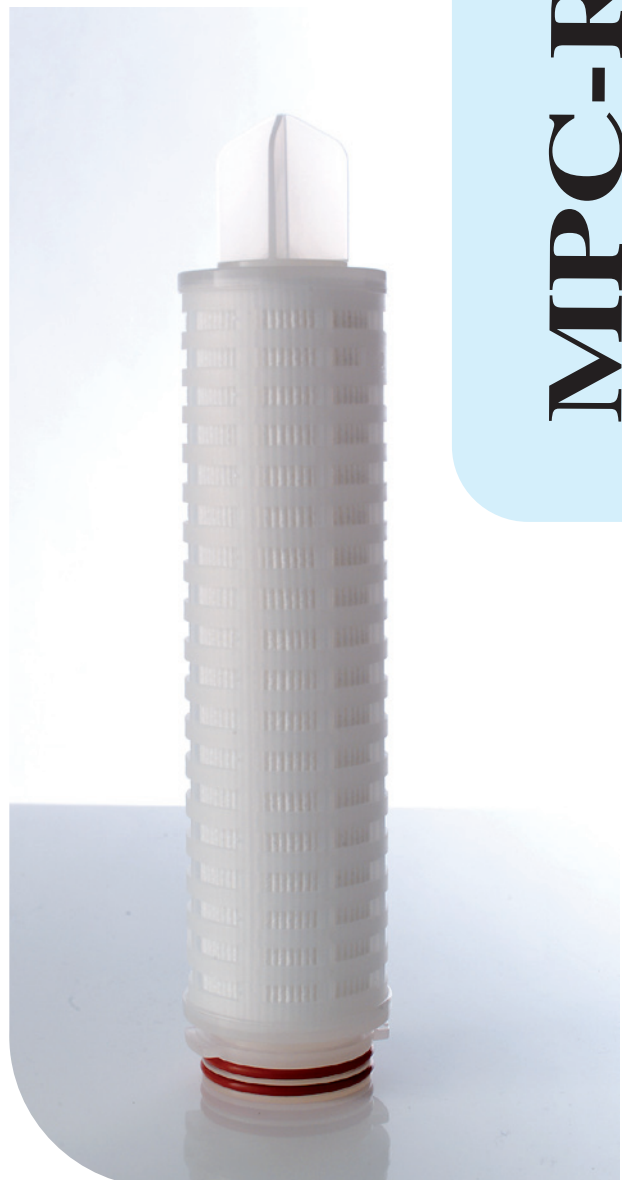
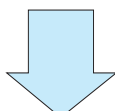
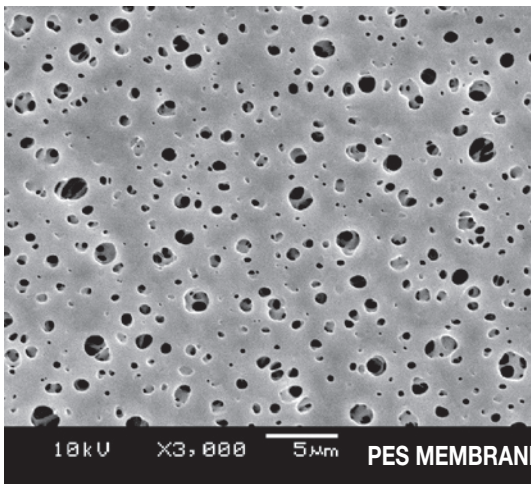
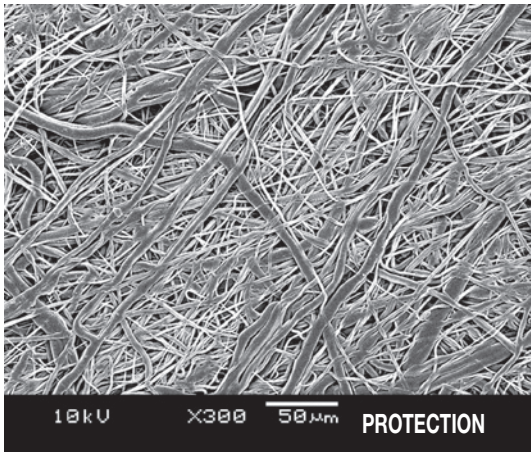
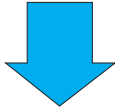


# Budget friendly PES membrane cartridge Two step design

The MPC-R has an **incorporated pre-filtration layer** -made using the latest polypropylene melt blown technology- that **protects the final membrane** which defines the absolute rating of the cartridge.

The **final membrane** used in the MPC-R filter is from a sulfonated **polyethersulfone** polymer, offered in a wide range of pore sizes to meet the requirements of very different and specific applications. These range from pre-and/or final-filtration in the food & beverage industry, process water treatment, etc...

The asymmetrical pore structure and a two step design (protection & final membrane layer) offers a high dirt loading capacity and an increased filtration performance compared to conventional low cost membrane cartridges.



# MPC-R

## Materials of construction

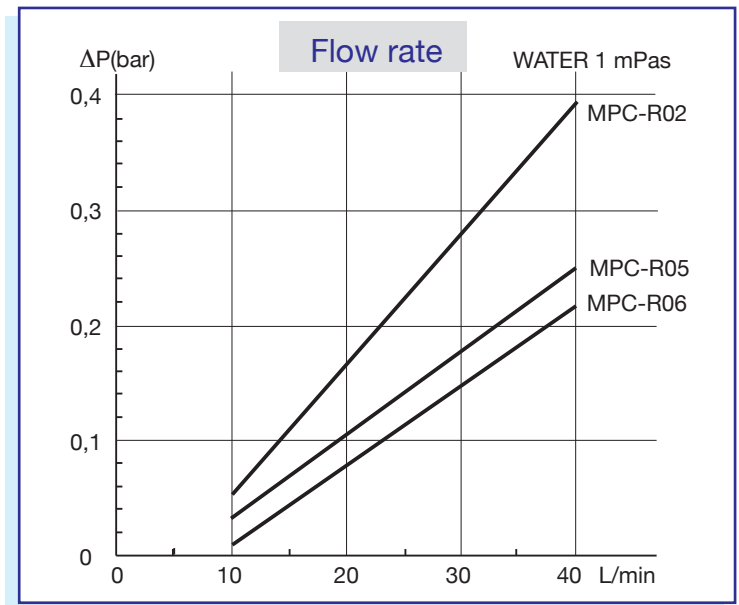
|                        |                  |
|------------------------|------------------|
| Protection layers:     | Polypropylene    |
| Filter medium:         | Polyethersulfone |
| Support layers:        | Polypropylene    |
| Core, cage & end caps: | Polypropylene    |
| Gaskets:               | ref. table       |

## Maximum Operating Conditions

|                                |         |
|--------------------------------|---------|
| Temperature:                   | 80°C    |
| Differential pressure at 20°C: |         |
| Out to In                      | 4,5 bar |
| In to Out                      | 2,5 bar |

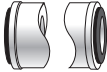




## Sterilization

|            |                  |
|------------|------------------|
| Autoclave: | 121°C for 30 min |
| Hot Water: | 85°C for 60 min  |



| Grade | Retention $\mu\text{m}$ | Filtration area in $\text{m}^2 / 250\text{L}$ |
|-------|-------------------------|---|
| R02   | 0,2                     | 0,38  |
| R05   | 0,45                    | 0,38  |
| R06   | 0,65                    | 0,38  |

## Ordering code

| nom.Length mm |              | Grade      | Gasket/O-ring | End Caps  |
|---------------|--------------|------------|---------------|---|
| <b>750L</b>   | <b>-MPC-</b> | <b>R02</b> | <b>E</b>      | <b>0</b>  |
| 125           |              | R02        | E = EPDM      | F  |
| 250           |              | R05        | N = NBR       | K  |
| 254           |              | R06        | S = Silicone  | 0  |
| 500           |              |            | V = FKM       | 5  |
| 508           |              |            | T = FEP/FKM   | 7  |
| 750           |              |            |               |   |
| 762           |              |            |               |   |
| 1000          |              |            |               |   |

With the reservation that product development might cause changes of specifications. Data sheet made February 2007.

### Manufacturer

**ROKI Techno Co.Ltd**  
6-20-12, Minamiohi  
Shinagawa-Ku  
Tokyo, 140-8576 Japan

### European Importer

**IK Inabata Europe S.A.**  
Avenue Louise 326 B18  
1050 Brussel, Belgium  
Tel. +32 2 640 49 95  
Fax +32 2 640 10 26  
www.inabata.be

### North America

**IK Inabata America Corp.**  
1270 Avenue of the Americas  
Suite 2212, New York,  
NY 10020, USA  
Tel. (212) 586-7764  
Fax (212) 245-2876  
www.inabataamerica.com

### Your distributor

